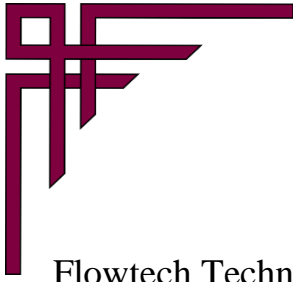




**FlowTech
Technologies Pvt Ltd.**



RAPID MIXER GRANULATOR



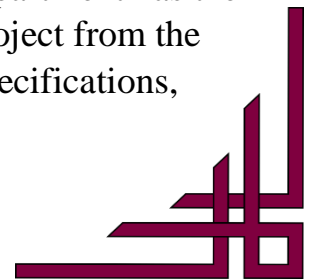
ABOUT US

Flowtech Technologies is leading provider of plants and machinery to Pharmaceuticals, Chemicals, Cosmetics, Food, Beverages, Distilleries and allied industries. We are one of the best designing and manufacturing company in India who executes wide turn-key projects especially in Pharmaceutical industries.

Our Company is situated in Industrial area of Dombivli which have close proximity to Mumbai, Thane and Navi Mumbai with team of highly potential workers, qualified personnel, experienced technical staff who are in the field of design, manufacturer and execution of pharmaceutical, Chemical, Cosmetics and FMCG projects for a long time.

Flowtech guarantee excellent products & after sales service. With the latest software and manufacturing system Flowtech can provide cost effective product and solution to our customers. Our team make sure that each instrument is inspected & assured under USP & FDA guidelines.

As a design build company, Flowtech can design and install your process plant & piping project. Our highly skilled engineering and design department has the experience and technical expertise to help you develop your project from the ground up. Our design team will design your project to your specifications, while suggesting options that can save you money and time.



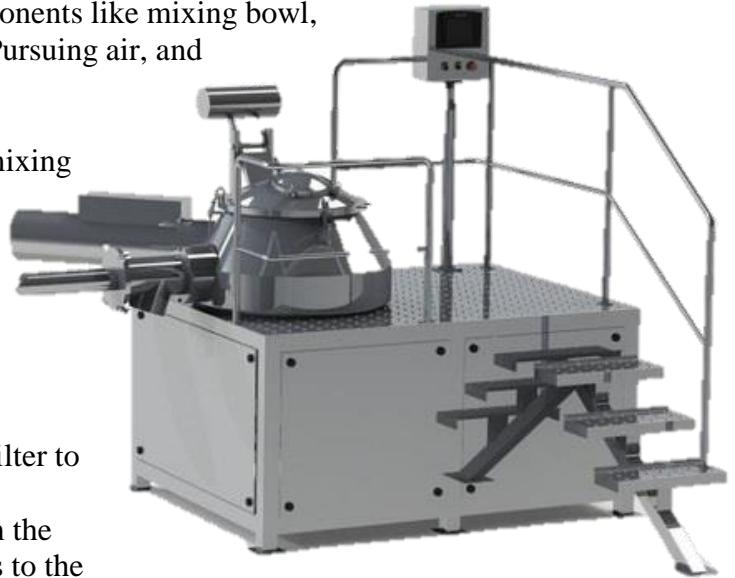
RMG – RAPID MIXER GRANULATOR

Rapid mixture granulator consists of components like mixing bowl, impeller, chopper, Discharge port, Filter, Purging air, and port provided for solution inlet.

Impeller and chopper are responsible for mixing and break granules mass. **Discharge points** are connected horizontally at the lower part of RMG, the discharge point is operated automatically with the help of a pneumatic cylinder (required **3-5 kg/cm²** compressed air pressure)

The filter is placed with aid of a vent air filter to remove purging air and retained granules inside. **Purging air** is supplied below from the impeller to prevent sticking of the granules to the impeller and also helps prevents contamination.

Purging Air Pressure ranges **5-6 kg.**



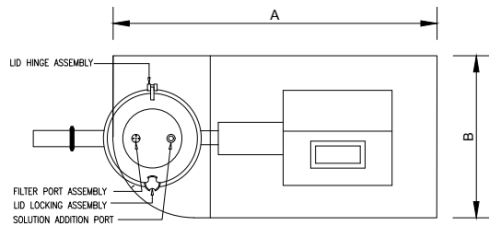
FEATURES

- ✚ Variant capacity (1L to 1250L)
- ✚ Scalability
- ✚ Design based on principles such as
 - Froude's no.
 - Tip velocity
 - Swept volume.
- ✚ Optional automated lid opening and blade lifting operations.
- ✚ Tangential blade assembly with inclined profile for mass movement and better mixing.
- ✚ Inline Cone mill (Optional)
- ✚ Torque measurement
- ✚ 21 CFR compliance automation

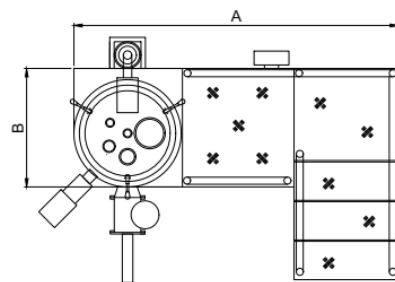
TECHNICAL SPECS

Model	Capacity			Bowl Dia (mm)	Power		Size			
	Gross (L)	Working (L)	Working (Kgs)		Main Motor	Chopper Motor	A	B	C	D
Lab	15	12	6	350	3	2	1000	600	900	1400
Pilot	25	20	10	410	5	2	1250	650	1000	1500
	50	40	20	520	5	3	1350	700	1000	1550
	75	60	30	600	7.5	3	1350	700	1000	1550
	100	80	40	650	10	5	2300	850	1500	2300
Production	150	120	60	750	15	5	2300	850	1500	2300
	250	200	100	920	20	5	2300	850	1500	2300
	500	400	200	1110	30	7.5	3000	1200	1500	2900
	750	600	300	1275	50	7.5	3000	1200	1500	3000
	1000	800	400	1400	60	10	3200	1600	1500	3500
	1250	1000	500	1525	75	15	3200	1600	1500	3500

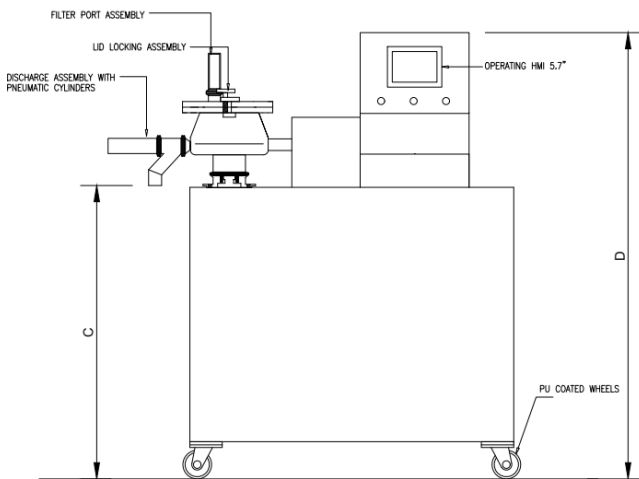
GRAPHICAL REPRESENTATION



PLAN VIEW

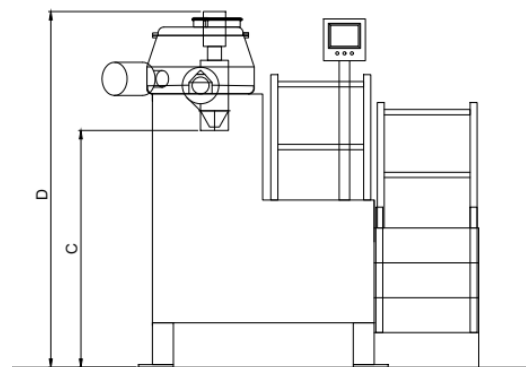


PLAN VIEW



FRONT VIEW

LAB/PILOT



FRONT VIEW

PRODUCTION



Plot No. - B-21, MIDC Phase-1, Opp Krishna Hotel
Dombivali (E), Thane- 421 203, Mumbai
Tel: +91 916 786 2055 / 66 / 0251 2990227
Email - info@[flowtechtechnologies.com](mailto:info@flowtechtechnologies.com)
Web - www.flowtechtechnologies.com